

PROFILE OF YOUR FAMOUS LOCAL TERMITE:

Mastotermes darwiniensis

Type: Subterranean

Castes: Queen, king, soldier, worker/reproductive

Nest type: this species is a subterranean non-mound builder which also nests in tree trunks, root crowns and stumps. Most subterranean galleries are found in the top 30cm of soil and they often forage out beyond 70 metres from the nest.

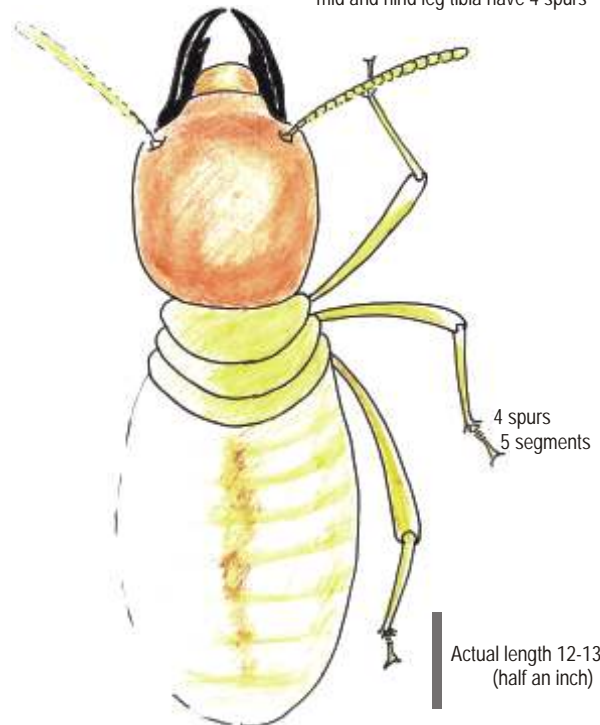
The queen lays batches of about 20 eggs in one mass at a time and the colony may number well over 100,000 individuals. Once it becomes this populous and if food is plentiful, a group may split off to form another, independent colony. Colonising flights are the usual method of dispersal.

Distribution: scattered areas generally north of the Tropic of Capricorn in Western Australia, Northern Territory, Queensland and coastal islands. Less usual in rainforest areas.

Economic significance: this is the largest and most destructive Australian termite within its range of occurrence. They inflict damage rapidly, not only to seasoned timber but many other plant, animal, rubber and plastic products. Living trees are killed by ring-barking and fruit, vegetable and cane crops can be severely damaged.

From "Australian Termites" by Hadlington and Staunton UNSW PRESS 2007

Identification Tips:
usual head and body length is 12-13mm
all tarsi have 5 segments (other termites have 4)
front tibia has 3 spurs
mid and hind leg tibia have 4 spurs



Mastotermes darwiniensis soldier caste

Will TermiteTraps work against Mastos?

Yes, the Traps are an aggregation device that is bigger than most others which means that large numbers of Mastos are in one place ready to treat. And, the more there are to treat, the more successful it will be. Ask us about your options by phoning the inventor on 1800 12345 7

What about in fruit tree plantations?

Yes, put the TermiteTraps throughout the crop. They are easy to monitor and treatment is so easy it is almost foolproof. Ask us for details.

How quickly will they eat out a Trap?

If you can't monitor the top window cap for telltale mud at least every two weeks we suggest you get some untreated wooden tomato stakes, cut them about 75 cm long, remove the black base of the TermiteTrap and insert up through the hole in the cardboard bait tube to give the Mastos something more substantial to eat.

Is the treatment different for Mastos?

Yes, the insect growth regulator chemicals are not suitable for Mastos but the use of fipronil is very effective. About 1 litre of a dilute mixture is poured in through the top of the Trap into the cardboard bait tube. The colony dies, usually within two weeks. Your local technician will be able to do this job in just a couple of minutes for minimum fee.

Can the TermiteTraps be reused?

Yes, just remove them from the ground after a successful treatment, scrape or hose out any remaining mud and cardboard, 'replant' the empty trap in a new spot and refill with any old cardboard and wood offcuts until the trap is filled to the top.

Ion Staunton
Inventor
1800 12345 7

